



**vtech®**

# Quick Start Guide



## Dash 'n' Deliver Scooter

By reducing the quantity of paper used for our Manuals, we aim to reduce our environmental impact and contribute to the preservation of the environment. The full version of the Instruction Manual is available online through the following links or by scanning the QR code.



For UK  
***[vtech.co.uk/manuals](https://vtech.co.uk/manuals)***



For AUS/NZ  
***[vtech.com.au/support/product\\_manuals](https://vtech.com.au/support/product_manuals)***

© 2025 VTech. All rights reserved.

Printed in China.

91-004785-002  

# INCLUDED IN THIS PACKAGE

- Dash 'n' Deliver Scooter
- Sticker Sheet
- Quick Start Guide

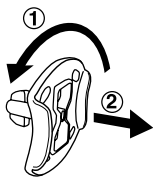
## WARNING:

All packing materials such as tape, plastic sheets, packaging locks, removable tags, cable ties, cords and packaging screws are not part of this toy, and should be discarded for your child's safety.

## NOTE:

Please keep this Quick Start Guide as it contains important information.

## Unlock the Packaging Locks:



① Rotate the packaging locks 90 degrees anticlockwise.

② Pull out and discard the packaging locks.

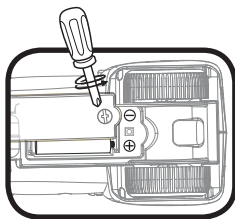
## WARNING:

Adult assembly required for battery installation.  
Keep batteries out of reach of children.

# GETTING STARTED

## Battery Removal and Installation

1. Make sure the unit is turned **Off**.
2. Locate the battery cover on the bottom of the scooter. Use a screwdriver to loosen the screw and then open the battery cover.
3. If present, remove old batteries by pulling up on one end of each battery.
4. Install 2 new AAA (AM-4/LR03) batteries following the diagram inside the battery box (for best performance, alkaline batteries or fully charged Ni-MH rechargeable batteries are recommended).
5. Replace the battery cover and tighten the screw to secure.



## IMPORTANT: BATTERY INFORMATION

- Insert batteries with the correct polarity (+ and -).
- Do not mix old and new batteries.
- Do not mix alkaline, standard (carbon-zinc) or rechargeable batteries.
- Only batteries of the same or equivalent type as recommended are to be used.
- Do not short-circuit the supply terminals.
- Remove batteries during long periods of non-use.
- Remove exhausted batteries from the toy.
- Dispose of batteries safely. Do not dispose of batteries in fire.

## RECHARGEABLE BATTERIES:

- Remove rechargeable batteries (if removable) from toy before charging.
- Rechargeable batteries are only to be charged under adult supervision.
- Do not charge non-rechargeable batteries.

## Disposal of batteries and product



The crossed-out wheeled bin symbols on products and batteries, or on their respective packaging, indicates they must not be disposed of in domestic waste as they contain substances that can be damaging to the environment and human health.



The chemical symbols Hg, Cd or Pb, where marked, indicate that the battery contains more than the specified value of mercury (Hg), cadmium (Cd) or lead (Pb) set out in the Batteries and Accumulators Regulation.

The solid bar indicates that the product was placed on the market after 13th August, 2005.



Please dispose of your product and batteries responsibly.

In the UK, give this toy a second life by disposing of it at a small electricals collection point\* so all of its materials can be recycled.

Learn more at:

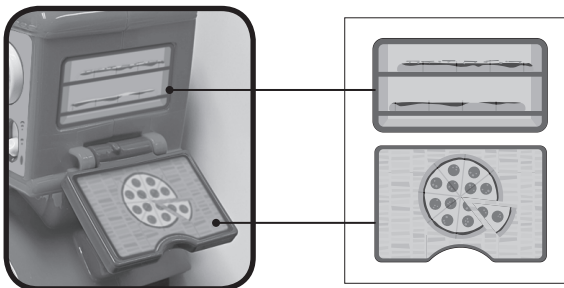
**[www.vtech.co.uk/recycle](http://www.vtech.co.uk/recycle)**

**[www.vtech.com.au/sustainability](http://www.vtech.com.au/sustainability)**

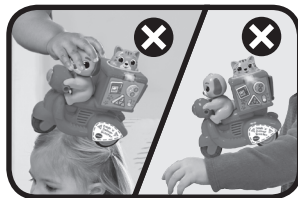
\* Visit [www.recyclenow.com](http://www.recyclenow.com) to see a list of collection points near you.

# LABEL APPLICATION

Please securely stick the label to the scooter as indicated below.



For your child's safety, only use the scooter on the floor. Do not press and release the vehicle on hair, skin or clothing. Loose items may get caught in the wheels during motion. Do not block the scooter's path with hands, feet or other body parts when it's moving forward. If something gets caught in the wheels, lift the scooter away from your child to stop its movement. Adult supervision required.



## CARE & MAINTENANCE

1. Keep the unit clean by wiping it with a slightly damp cloth.
2. Keep the unit out of direct sunlight and away from any direct heat sources.
3. Remove the batteries if the unit will not be in use for an extended period of time.
4. Do not drop the unit on hard surfaces and do not expose the unit to moisture or water.
5. If the unit stops working or malfunctions, install a new set of batteries.

## PRODUCT WARRANTY/ CONSUMER GUARANTEES

### UK Customers:

Read our complete warranty policy online at [vtech.co.uk/warranty](http://vtech.co.uk/warranty).

### Australian Customers:

VTECH ELECTRONICS (AUSTRALIA) PTY LIMITED – CONSUMER GUARANTEES

Under the Australian Consumer Law, a number of consumer guarantees apply to goods and services supplied by VTech Electronics (Australia) Pty Limited. Please refer to [vtech.com.au/consumerguarantees](http://vtech.com.au/consumerguarantees) for further information.

#### Contact VTech

Tel: 0330 678 0149 (from UK)  
+44 330 678 0149 (outside UK)  
1800 862 155 (Aus) / 0800 400 785 (NZ)  
[www.vtech.co.uk](http://www.vtech.co.uk)  
[www.vtech.com.au](http://www.vtech.com.au)